

**New Product Bulletin**

**TO:**  
Selected Dealers / Authorized Service Centers - 2 Wh  
Spare Parts Dealers & Distributors



Product Category **Motorcycle**  
CC Group **220**  
Bulletin No. **NP: 17**  
Date **06/01/2010**

**Sub: Introduction of "Pulsar 220 DTSi"**

Dear Sirs:

We are pleased to introduce small fairing version of '**Bajaj Pulsar 220 DTSi**', the 220 S. This bike offers a great package of Style, Power & Technology in its class of bikes. We enclose herewith following information of this new bike, which gives you insight on product features, maintenance details etc.

**Product related information**



1. Salient Features	Annex – 1
2. Technical Specifications	Annex – 2
3. Read before you ride	Annex – 3
4. Pre-Delivery Inspection Checklist	Annex – 4

**Maintenance related information**



5. Periodic Maintenance & Lubrication Chart	Annex – 5
6. Parts Exclusive from 220 DTSi Full Fairing.	Annex – 6
7. Reimbursement of warranty Jobs	Annex – 7

Note:-

1. This variant shall be available along with the existing 220F with Full Fairing, hence giving the customer a choice.
2. In view of launching of Genuine Bajaj DTSi branded oil there are changes in service Schedule & Oil change intervals. However the Oil change frequency is valid only if Genuine Bajaj DTSi oil is used as replacement. Kindly refer Maintenance schedule .

Please go through above information. Ask your workshop & spare parts managers to share the same with all staff and act upon the action points as per action matrix enclosed.

Thanking You,  
Yours faithfully,

Prashant G. Pingle  
Manager (Service-Probiking)




Cc to: Field Service Team/RTC team/RMs  
(Ser.)/RSMs/Technical  
Team

Service  
Team

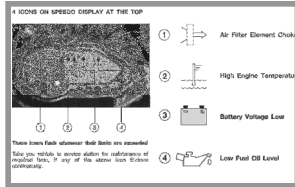
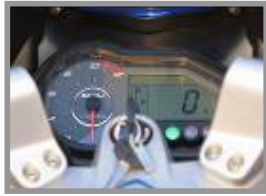


**Annex-1**

**Salient Features**

Attribute	Key Features	Advantages & Benefits
<p><b>Style</b></p> 	<ul style="list-style-type: none"> <li>• Brawny masculine looks</li> <li>• Stylish split seats</li> <li>• 2 piece grab rail</li> <li>• Tank spoiler</li> <li>• Clip on - split type handle bar. Black styling</li> <li>• Thicker and pinched clamped fork</li> <li>• Naked chain with O ring.</li> <li>• New colours.</li> <li>• 3 D metallic decals on petrol tank.</li> <li>• All black painting.</li> <li>• Stylish stainless steel silencer.</li> <li>• Clear lens blinkers.</li> </ul>	<ul style="list-style-type: none"> <li>• Bold assertive stance, Sporty looks. Brains, brawn and definitely bold.</li> <li>• The style that lets you break free.</li> </ul>
<p><b>Performance</b></p>  <p><b>DTSi Engine</b></p>	<p><b>Performance</b></p> <ul style="list-style-type: none"> <li>• 4 stroke DTSi 220 cc air cooled engine with an oil cooler. Engine generating 21 Ps @ 8500 rpm.</li> <li>• Digital twin spark ignition.</li> <li>• Digital DC CDI with TPS control</li> <li>• DC ignition system.</li> <li>• CV carburetor</li> <li>• New starter clutch.</li> <li>• Controlled lubrication system for clutch.</li> <li>• Bigger Exhaust-TEC.</li> <li>• Bigger catalytic converter.</li> </ul>	<ul style="list-style-type: none"> <li>• DTSi technology advantages :             <ol style="list-style-type: none"> <li>1. Good power and pick up.</li> <li>2. Better fuel efficiency.</li> <li>3. Lesser emissions.</li> </ol> </li> <li>• DC Ignition system advantages :             <ol style="list-style-type: none"> <li>1. Easy to start due to low trigger start RPM.</li> <li>2. Cold startability improved due to auto choke.</li> </ol> </li> <li>• Better engine performance</li> <li>• Ride that can be enjoyed due to             <ol style="list-style-type: none"> <li>1. Razor sharp response to throttle inputs.</li> <li>2. More power at all load conditions, better torque at low rpm, less emissions.</li> <li>3. Ease of startability during winter mornings too.</li> <li>4. Environment friendly bike.</li> <li>5. Smooth gear shift</li> </ol> </li> </ul>
<p><b>Comfort</b></p> 	<ul style="list-style-type: none"> <li>• Large 37 dia front fork with more stroke length.</li> <li>• Nitrox shockers at the rear.</li> <li>• Bigger suspension travel at rear due to smaller wheel dia.</li> <li>• Swing arm with needle roller bearings at pivot</li> <li>• Pinch clamp fork.</li> <li>• Wide tyres at front (90/90/17) and rear (120/80/17).</li> <li>• Clip on type handle bar.</li> </ul>	<ul style="list-style-type: none"> <li>• More stroke length to absorb shocks.</li> <li>• Better dampening during high speed drives.</li> <li>• More stroke length to absorb shocks.</li> <li>• Low friction and high rigidity.</li> <li>• Smooth - parallel fork sliding action.</li> <li>• Better grip available.</li> <li>• Isolation of vibrations due to rubber dampening.</li> <li>• Smooth ride at any terrain.</li> <li>• Smooth ride at any speeds/terrain.</li> <li>• Comfort on country roads too.</li> <li>• Excellent drive</li> <li>• No sticktion at front fork.</li> <li>• Excellent Road holding characteristics.</li> <li>• No vibrations.</li> </ul>

**Convenience**



- Self cancelling indicators.
- LCD Speedo console.
  1. Low Battery level indicator.
  2. Filter foam clogging indicator.
  3. Engine oil temp sensor.
  4. Low Engine oil level indication sensor.
  5. Day - night mode
  6. Digital speed indication.
  7. Tripmeter to record two trips.
  8. Reserve indicator warning LED lamp.
  9. Engine Over speed limiter.
  10. Digital fuel gauge.
  11. Tachometer for engine speeds.
- Intelligent battery saves function during excess cranking.
- Illuminated handle bar switches.
- Low maintenance battery.
- High capacity O ring chain.
- Anti scratch tank pad.

- No need to push back the button after turns.
- Get the warning before battery conks off.
- Clean filter to keep engine healthy.
- Save oil related damages.
- Easy on eyes during night drive, can see during day time.
- Easy of reading
- Better to claim conveyance bills.
- Protects the engine from excess raving.
- Easy to read.
- Monitor and maintain engine speeds.
- Disables cranking after three cranks, thus saving battery drain.
- Shuts off within 3.5 seconds, thus saving continuous battery drain.
- Delight to watch during night.
- Do not worry to fill up electrolyte level.
- Dust would not enter inside chain.
- Tank protected from scratches.
- Easy to ride without any driving/operating/maintenance hassles.

**Safety**



- Bigger front disc brake.
- Bigger rear disc brake.
- Tubeless tyres.
- High strength chassis.
- DC head lamp
- 3000 combination ignition lock - twin track key

- Confidence inspiring brakes.
- Confidence inspiring brakes.
- Would deflate slowly allowing you to reach safely.
- Better strength and stability on drive.
- Better illumination during low idling speeds too.
- Pilfer proof.
- Safety on drive by better braking/lights.



<p>springs.</p> <p>Brakes:</p> <p>    Front : Hydraulically operated disc brake</p> <p>    Rear : Hydraulically operated disc brake</p> <p>        Tyres:</p> <p>    Front : 90x90 X 17, 49P, Tubeless</p> <p>    Rear : 120/80 X 17, 61P, Tubeless</p> <p>Tyre pressure:</p> <p>    Front : 2.00 kg/cm<sup>2</sup> (28.0 Psi) (Solo &amp; Pillion)</p> <p>    Rear : 2.00 kg/cm<sup>2</sup> (28.0 Psi) (Solo)</p> <p>    Pillion - Rear : 2.25 kg/cm<sup>2</sup> (32.0 Psi)</p> <p>Rims :</p> <p>    Front : 1.85 x 17</p> <p>    Rear : 2.50 x 17</p>	<p><b>NOTES :-</b></p> <ul style="list-style-type: none"> <li>• Values given above are nominal and for guidance only, 15% variation is allowed to cater for production and measurement variation.</li> <li>• All dimensions are under unladen condition.</li> <li>• Definitions of terminologies wherever applicable are as per relevant IS / ISO standards.</li> <li>• Specifications are subject to change without notice.</li> </ul>
---	---



**Annex - 3**

## **Read Before You Ride**

### **A Starting the vehicle :**

- 1 Put the Ignition and Kill switch in ON position.
- 2 Confirm that the vehicle is in neutral.
- 3 Button starts the engine without opening throttle.

### **B Warning indicators on Speedometer :**

There are 4 indicators which would start flashing, indicating the need of maintenance for that part. Customer should visit authorized service station whenever these warning indicators start flashing.

- 1 Choked air filter indicator.
- 2 High engine oil temperature indicator.
- 3 Low battery charge level indicator.
- 4 Less engine oil level indicator.
- 5 Maintaining Battery charge level is very essential, for starting of vehicle.

### **C Important Does and Don'ts :**

- 1 The powerful engine with quick throttle response would make the driver to open the accelerator with caution. Do not open the throttle suddenly.
- 2 Use both the brakes at a time. Use of front brake for dead stop would give better control. Since the front axle weight is more, the rear brake has been deliberately toned down to avoid skidding.
- 3 As soon as "fuel res" red indicator light is ON, fill up the fuel at the nearby filling station.
- 4 Use better quality fuel only. Anything above 87 octane rating. Do not use any additives with the petrol. Since this is a precision machine, adulterated fuel should never be used.
- 5 Tyres fitted on this vehicle are tubeless tyres. Do not allow anybody to open them by using wrong tools. Go to authorized MRF tyre dealers who are equipped with necessary tools, so as to avoid possible damage to wheel rim.
- 6 Chain with built in O ring is fitted on this vehicle. The lubrication at every 500 kms with SAE 90 oil and adjustment at every 1000 kms would be essential. Pl see to it that the chain never runs dry.
- 7 Do not add any additional electrical / electronic gadgets on the vehicle, as they would disturb functioning of engine management system.
- 8 During washing of the vehicles, pl does take care of different sensors fitted on engine. Do not direct the jet of water towards electrical parts and sensors.
- 9 For stainless steel silencer, care will have to be taken to avoid oil contact. Otherwise stain marks would be seen, thus damaging aesthetics. The silencer would turn slightly chromish after initial use, which is a natural phenomenon.

**" Wishing you a Pulsating ride "..... "Happy Riding".**



Annex - 4

## Pre-Delivery Inspection Checklist (PDI)

Following is the checklist for carrying out PDI of "Pulsar DTSi 220 "- motorcycle. While next annexure (no. 6) gives detailed Standard Operating Procedure for PDI, this checklist is to understand various check points those are to be checked / inspected before delivery of the new vehicle.

Whether BAL Service Executive carries out sample PDI or Dealer staff does, each vehicle should be checked as per the points given below. This ensures trouble free vehicle delivery to the customer

<b>PDI Check List Pulsar 220cc- DTSi</b>			
<b>Chassis No</b>		<b>Date :</b>	
<b>Engine No</b>			
<b>Dealer Name</b>		<b>PDI Done By</b>	
<b>Please ensure that following checks are carried out during PDI before Delivery of vehicle</b>			
<b>To Check</b>	<b>Check For</b>	<b>✓ If OK X If Not OK</b>	<b>Observations Remarks</b>
<b>Engine</b>			
Engine Oil:	Oil Level OK/Top up if required	<input type="checkbox"/>	
SAE 20W50API SJ or SL+ JASO MA	Oil leakage if any- specify source of oil leakage	<input type="checkbox"/>	
Idling rpm( Warm Up)	Check/Adjust if reqd( 1400+- 100 rpm) with tachometer	<input type="checkbox"/>	
Fasteners ( Check torque)	Engine Mounting Bolts ( M- 8 2.2 Kgm , M-10 2.4 Kgm)	<input type="checkbox"/>	
	Silencer Mounting Bolts( 3.5~4.0Kgm)	<input type="checkbox"/>	
	Drain Bolt (2.5 Kgm)	<input type="checkbox"/>	
	Rocker Arm Bolts( 2.5-3 kgm)	<input type="checkbox"/>	
<b>FUEL SYSTEM</b>			
Fuel Tank/ Pipes	No leakage/ Correct Fitment	<input type="checkbox"/>	
Carburettor	No leakage/ Correct Fitment	<input type="checkbox"/>	
Fuel Cock	Smooth Operation	<input type="checkbox"/>	
<b>FRAME</b>			
Tyre Pressure	Front 2.00Kg/cm ( 28.4 PSI)	<input type="checkbox"/>	
	Rear Solo 2.00 Kg/cm ( 28.4 PSI)	<input type="checkbox"/>	
	Rear Pillion 2.00 Kg/cm ( 30.5 PSI)	<input type="checkbox"/>	
<b>CONTROLS</b>			
Brakes	Front Brake lever free play (2~3 mm)	<input type="checkbox"/>	
	Rear Brake pedal free play(25~30mm)	<input type="checkbox"/>	
Throttle	Grip Free play (2~3 mm) & smooth operation	<input type="checkbox"/>	
Clutch	Smooth operation, no juddering, Free play 2~3 mm	<input type="checkbox"/>	
Clutch cable	Routing thru the bracket located near lower 'T' on vehicle RH side	<input type="checkbox"/>	
Drive Chain	Slackness standard: 25~ 35 mm	<input type="checkbox"/>	
<b>SUSPENSION</b>			
Front Fork	No leakage/ smooth working(wipe out if any seepage)	<input type="checkbox"/>	

Rear Shock Absorber	Spring Adjuster notch position: 1st notch ( Standard)	<input type="checkbox"/>	
Steering	Smooth Operation ( No play/ Sticky movement)	<input type="checkbox"/>	
Lock operation	Steering cum ignition , rider seat ( pillion+rider),LH/RH side cover lock	<input type="checkbox"/>	
Fasteners ( Check Torque)	Front Axle nut - 8~ 9 Kgm	<input type="checkbox"/>	
	Rear Axle nut 8~10 Kgm	<input type="checkbox"/>	
	Handle Bar bolts 2~2.2 Kgm	<input type="checkbox"/>	
	Steering Cap bolt 5Kgm	<input type="checkbox"/>	
	RSA Mtg Dome nut - 3.5~ 4.0 Kgm	<input type="checkbox"/>	
	Swing Arm Pivot nut - 8~ 10Kgm	<input type="checkbox"/>	
	Caliper install bolts (Front & Rear) - 2.2 ~ 2.8 Kgm	<input type="checkbox"/>	
	Brake Disc Allen bolts - 2.6 ~ 3.2 Kgm	<input type="checkbox"/>	
Fork Pinch Clamp bolt - 2.0 ~ 2.2 Kgm	<input type="checkbox"/>		
<b>ELECTRICAL</b>			
Battery	Charge Status ( 12.5V open circuit terminal voltage)	<input type="checkbox"/>	
	HRD test (To show Green light only)	<input type="checkbox"/>	
	Tightness of battery- terminals/ Cables. Petroleum jelly	<input type="checkbox"/>	
	Position of fuse box ( 2 nos)	<input type="checkbox"/>	
		<input type="checkbox"/>	
All Bulbs Working	Head light (both bulbs working).	<input type="checkbox"/>	
	Headlight tail light illumination switch off after 3 seconds	<input type="checkbox"/>	
	Pilot lights (2), LED Tail/ Stop, Side Indicator, Speedometer LEDS, Number plate lamps	<input type="checkbox"/>	
	Auto switch "OFF" of Indicators(by moving Handle Bar	<input type="checkbox"/>	
	Turn Pilot, High beam, Neutral Indicator, Tell tale icons on, switch LH/RH,	<input type="checkbox"/>	
Switch operation	LH & RH control, Ignition, Fr& Rr brake & Kill switch	<input type="checkbox"/>	
Starter Motor	Proper working/ Engagement	<input type="checkbox"/>	
<b>TEST DRIVE</b>			
Starting	Cold Start & Warm Start	<input type="checkbox"/>	
	Working off Auto Choke( Click sound when ignition is turned "ON")	<input type="checkbox"/>	
	Idling Speed ( Warm condition) ( 1400+/- 100 rpm) with tachometer	<input type="checkbox"/>	
Drive Ability	Throttle response	<input type="checkbox"/>	
	Brakes ( Front & Rear)	<input type="checkbox"/>	
	Digital Speedometer, Odometer, Trip meters, Fuel guage & Fuel Indicator red lamp	<input type="checkbox"/>	
CO% Check	CO should be 2% in engine warm condition at idling rpm	<input type="checkbox"/>	
Cleaning	Wash & Clean vehicle properly	<input type="checkbox"/>	

**IMPORTANT NOTE**

Look for any external damages in transit: Please check, record & rectify send report with photos.

- Moisture / Oil collecting tube of Air filter should be properly fitted and routed correctly.
- Both LH & RH side spark plug caps must be tightly secured and ensure proper functioning of Spark Plugs.
- TPS on carburetor for functioning's



**Annex - 5****Periodic Maintenance & Lubrication Chart**

During scheduled periodic services & warranty period

after while customer avail services, one should follow the given below maintenance chart for carrying out recommended job elements. Attending specific element at specific period/kms and enable consistent performance of the vehicle. SAs should explain & educate customers on this.

S.N.	Operation	Servicing	Recommended Frequency							
			1 <sup>st</sup>	2 <sup>nd</sup>	3 <sup>rd</sup>	4 <sup>th</sup>	5 <sup>th</sup>	6 <sup>th</sup>	7 <sup>th</sup>	
			Kms	750	5000	10000	15000	20000	25000	
1	Servicing		■	■	■	■	■	■	■	1st - 750 Kms / 30 Days 2nd onward @5000 Kms
2	Engine idling speed / CO%	A	A	A	A	A	A	A	A	
3	Valve tappet clearance	A	A	A	A	A	A	A	A	
4	Engine oil* - Bajaj DTS-i 10000	R	R		R		R		R	Replace at 10000 Kms*
5	Oil strainer / Centrifugal filter	CL	CL		CL		CL		CL	Clean at 10000 Kms
6	Spark plugs functioning / Gap (If applicable)	C, A, R	C, A	C, A	C, A	R	C, A	C, A	R	Replace at every 15000 Kms
7	Air cleaner element Clean / Replace VV	CL, R	CL	CL	CL	R	CL	CL	R	Clean at every 5000 Kms Replace at every 15000 Kms
8	Air filter cover 'O' Ring	R					R			Replace at every 20000 Kms
9	Fuel cock sediment bowl cleaning	CL		CL	CL	CL	CL	CL	CL	
10	Carburettor float bowl cleaning	CL			CL		CL		CL	Clean at every 10000 Kms
11	Carburettor rubber duct	C, R	C	C	C	C	R	C	C	Replace at every 20000 kms
12	Fuel pipes	C, R	C	C	C	C	R	C	C	Replace at every 20000 kms
13	Battery electrolyte level	C, A	C, A	C, A	C, A	C, A	C, A	C, A	C, A	
14	Clutch lever free play	C, A	C, A	C, A	C, A	C, A	C, A	C, A	C, A	
15	Throttle grip play	C, A	C, A	C, A	C, A	C, A	C, A	C, A	C, A	
16	Rear brake pedal free play	C, A	C, A	C, A	C, A	C, A	C, A	C, A	C, A	
17	Brake lining or pad wear	CL, R		CL	CL	CL, R	CL	CL	CL, R	Replace at every 10000 kms
18	Brake fluid level / Top up / Replace (If applicable)	C, A, R	C, A	C, A	C, A	C, A	C, A	C, A	R	Replace at every 30000 kms
19	Master cylinder cup and dust seal (If applicable)	R							R	Replace at every 30000 kms
20	Caliper piston seal and dust seal (If applicable)	R							R	Replace at every 30000 kms
21	Brake hose pipe (If applicable)	C, R							C, R	Replace at every 30000 kms
22	Brake cam & pedal pivot pin	L				L			L	

Enclosure to Service New Product Bulletin 'NP : 17 ' dated 06<sup>th</sup> Jan 2010

23	Steering play	C, A	C, A	C, A	C, A	C, A	C, A	C, A	C, A	
24	Steering stem bearing	C, L, R			C,L,R		C,L,R		C,L,R	
25	All fasteners tightness	C, T	C, T	C, T	C, T	C, T	C, T	C, T	C, T	
26	Rear sprocket fasteners	C, T	C, T	C, T	C, T	C, T	C, T	C, T	C, T	
27	Rear wheel rubber shock damper	C, R			C, R		C, R		C, R	Replace at every 10000 kms
28	Silencer drain hole cleaning	CL	CL	CL	CL	CL	CL	CL	CL	Clean at every 5000 Kms
29	Cylinder head de-carbonising, valve lapping & Replace valve oil seals	CL				CL			CL	Clean at every 15000 Kms
30	Engine air breather tube	R					R			Replace at every 20000 Kms
31	Drive chain slackness adjustment & lubrication	C, A, L	C,A,L	C,A,L	C,A,L	C,A,L	C,A,L	C,A,L	C,A,L	Lubricate at every 500 kms. A- slackness whenever reqd.
32	Drive chain 'O' ring type (If applicable)	L								At every 500 Kms
33	Drive chain remove, clean, insp. & lubricate (O/H)	CL, L			CL, L		CL, L		CL, L	At every 10000 Kms
34	Drive chain link lock	R			R		R		R	Replace at every 10000 Kms
35	Wheel bearing (for non sealed bearings only)	C, L					C, L			At every 20000 Kms
36	Tyre tread wear (replace if worn out till TWI limit)	C, R			C, R	C, R	C, R	C, R	C, R	At every 5000 kms i.e. at every service after 2nd service
37	Front fork oil	R					R			Replace at every 20000 Kms
38	Auto choke, Thermal sensor (If applicable)	C, A	C, A	C, A	C, A	C, A	C, A	C, A	C, A	At every 5000 Kms
39	TPS (If applicable)	C, A	C, A	C, A	C, A	C, A	C, A	C, A	C, A	At every 5000 Kms
40	RSA - Check gas pressure (If applicable)	C, A					C, A			At every 20000 Kms.
41	Starter clutch bush kit for dry type (If applicable)	CL, R				CL, R			CL, R	
42	Clutch switch cleaning (If applicable)	CL			CL		CL		CL	
43	General lubrication	L	L	L	L	L	L	L	L	
44	Swing arm pivot pin lubrication	L					L			Lubricate at every 20000 Kms
45	Engine foundation silent bush (If applicable)	R				R			R	Replace at every 15000 Kms
46	Lubrication of gear starter clutch	L		L	L	L	L	L	L	L-Every 5,000 kms.
47	Clutch, Accelerator cable	R								R-Every two years

**C : Check, A : Adjust, CL : Clean, R : Replace, T : Tighten, L : Lubricate**

**Note:** Parts / Lubricants to be replaced as per Periodic Maintenance and Lubrication Chart are mandatory and the same are chargeable to customer.

Engine Oil		
Model	Grade	Quantity
Pulsar 220-F CC	SAE 20W50 of API 'SL' + JASO 'MA' Grade	Drain & Refill = 1150 ml. Engine Overhaul = 1300 ml.

**Note:-Warranty limit:- 2 years or 30,000 kms.( Whichever occurs earlier).  
3 Free Services & 4 Paid Services for warranty to remain valid.**

## EXCLUSIVE SPARE PARTS LIST

## ANNEX 6

S.N	Part No	Part Name
1	JC201017	Control Switch LH
2	JC201018	Control Switch RH
3	DJ181011	Handle Bar Weight
4	JC201045	Switch Assly Ignition
5	DJ201195	Clutch Switch
6	JC181029	Lock Set 4 in 1
7	DK71052V	Fuel Tank - Wine Red
8	DK71054K	Fuel Tank - P Blue
9	DK71054L	Fuel Tank - Misty Grey
10	DK71054M	Fuel Tank - M.Black
11	52DH0530	Side Cover LH - W.Red
12	52DH0528	Side Cover LH - P.Blue
13	52DH0532	Side Cover LH - M.Grey
14	52DH0534	Side Cover LH - M.Black
15	52DH0531	Side Cover RH - W.Red
16	52DH0529	Side Cover RH - P.Blue
17	52DH0533	Side Cover RH - M.Grey
18	52DH0535	Side Cover RH - M.Black
19	DK161246	Seat Cowl Decal - CW Red
20	DK161247	Seat Cowl Decal - PL Blue
21	DK161248	Seat Cowl Decal - MG Silver
22	DK161249	Seat Cowl Decal - M.Black
23	DK73042V	Front Fender - W.Red
24	DK73044K	Front Fender - P.Blue
25	DK73044L	Front Fender - Misty Grey
26	DK73044M	Front Fender - M.Black
27	DH74012V	Fairing - Wine Red
28	DH74014K	Fairing - Plasama Blue
29	DH74014L	Fairing - Misty Grey
30	DH74014M	Fairing - Midnight Black
31	JC141037	Pulsar Tank Grey Chrome Decal LH - Black, Blue
32	JC141038	Pulsar Tank Grey Chrome Decal RH - Black, Blue
33	JC141039	Pulsar Tank Grey Chrome Decal LH - Silver
34	JC141040	Pulsar Tank Grey Chrome Decal RH - Silver
35	JC141021	Tap Assly
36	30141052	Packing
37	DK161142	Cover Chain
38	DJ221003	Mirror Assly LH
39	DJ221004	Mirror Assly RH
40	DJ201140	Cable Assly - ( Battery to Earth )
41	39158821	O ring for tool kit
42	DK151060	Sprocket Hub ( 36T)
43	DV101048	Sprocket Drive
44	JC181022	Cover Trail B

45	JC181023	Cover Cussion
46	JC181024	Lamp Shade Assly
47	DJ181064	Grommet Fairing Mounting
48	DG181036	Flange Bolt
49	JC181027	Front Number Plate Assly
50	JC181025	Front Number Plate Bkt
51	DP161144	Front No Plate
52	JC181026	No Plate Mounting Bkt
53	DJ181033	Windshield
54	JC191014	Instrument Cluster
55	JC201008	Head Lamp Assly Complete
56	DJ201133	Head Lamp Housing
57	DJ201134	Lens
58	DJ201135	Pilot Reflector LH
59	DJ201136	PILot Reflector RH
60	DJ201066	Main Reflector
61	DJ181120	Mask
62	DJ161229	Clip Nut M5
63	DH181052	Fairing Mounting Bkt Upper
64	39155304	Flanged Bolt
65	DJ181065	Clip Nut M6
66	DJ181064	Grommet Fairing Mounting
67	DJ181029	Collar Fairing Mtg
68	JC201021	Hall Sensor Assly - SCB
69	JC201016	Switch Body Control Unit
70	DJ201202	Assly Regulator

Critical parts list for maintaining customer satisfaction : WM to review the stocks every month start/mid month.Maintaining bare minimum level of all these parts is very essential from customer satisfaction point of view. Service engineer to audit few parts from the list updated by spares manager.

**' Labour Schedule' for jobs eligible under warranty :  
Remboursement of Warranty Jobs**

**Annex - 7**

SN	Replacement under warranty at dealership	U/W job completion time for Pulsar 220 DTS-I S	Labour hours to be claimed in units
1	Oil Cooler replacement.	30.00	2
2	Replacement of Rear Disc brakes.	30.00	2
3	Replacement of rear Disc Pads ( within 1000 kms)	15.00	1
4	Master Cylinder Major replacement	45.00	3
5	Caliper Assembly – Major Kit replacement	60.00	4
6	Front Wheel Drum Bearing replacement	30.00	2
7	Brake Disc replacement	45.00	3
8	Disc holder plate on Wheel Drum replacement	45.00	3
9	Master Cylinder replacement	60.00	4
10	Rear Brake Hose replacement	45.00	3
11	Air filter Box Assembly replacement	30.00	2
12	Coupler / Hub Bearing / Hub replacement	45.00	3
13	Steering Lock / Key replacement	30.00	2
14	Disc holder plate on Wheel Drum replacement	30.00	2
15	Rear Fender / Mudguard replacement	45.00	3
16	Speedo case/cable replacement	15.00	1
17	Rider Seat Cowling replacement	15.00	1
18	Windshield/Fairing replacement	15.00	1
19	Complete Lock Set replacement	30.00	2
20	Fuel Tank replacement	30	2
21	Replacement of front Disc Pads ( within 1000 kms)	30	2
22	Brake Disc replacement	75	5
23	Front Brake Hose replacement	90	6
24	Front Fork Oil Seal one side	60	4
25	Front Fork, Bearing Races, Cones & Steel Balls replacement	120	8
26	Fork Inner Tube one side replacement	60	4
27	Fork Outer Tube one side replacement	60	4
28	Front Fork Upper Holder replacement	120	8
29	Front Fork Lower Holder replacement	120	8
30	Fork Spring one side replacement	60	4
31	Lamp Shade Replacement- One side	45	3
32	Trailing Arm Bush/dust covers replacement	120	8
33	Trailing (Swing Arm) replacement	120	8
34	Master Cylinder Major Kit replacement	120	8
35	Caliper Assembly – Major Kit replacement	120	8
36	Master Cylinder replacement	120	8
37	Magneto Rotor replacement	60	4
38	Stator Plate Assembly replacement	60	4
39	Chassis / Frame replacement	480	32
40	Replacing handle bar	30	2
41	Replacement of Chain sprocket kit	60	4
42	Engine Foundation Bush Kit replacement	60.00	4

43	Fuel cock replacement.	15.00	1
44	Magneto Cover replacement	15.00	1
45	Centrifugal Filter Cover/Gasket replacement	30.00	2
46	Crank Case (LH) Gear Shifter Shaft Oil Seal replacement	30.00	2
47	Clutch Centrifugal	30.00	2
48	Change Gear Shifter Lever Mechanism replacement	45.00	3
49	Gear Return Spring / Shaft Pawl / Spring replacement	45.00	3
50	Carb Assembly replacement	30.00	2
51	Starter Counter Gear/Bush/NRB replacement	30.00	2
52	Guide Starter 'O' ring / Oil seal replacement	30.00	2
53	Guide Starter Assly / Gear Inner Bush replacement	30.00	2
54	Clutch Cover replacement	60	4
55	Shaft Release Clutch / Oil Seal replacement	60	4
56	Oil Pump Assembly replacement	75	5
57	Clutch (Friction / Steel) Plates replacement	90	6
58	Cylinder Head Assembly replacement	120	8
59	Valve/Springs/Seal replacement	120	8
60	Rocker / Shaft Rocker Arm replacement	120	8
61	Valve/Valve Guide replacement	120	8
62	Timing Chain / Sprocket replacement	165	11
63	Cam Shaft Both Bearings replacement	120	8
64	Cam Shaft assly. Replacement	120	8
65	Set Primary Gear (Driver & Driven) / replacement	165	11
66	Body Balancer Assembly replacement	165	11
67	Cylinder Block/Piston Assembly replacement	180	12
68	Piston Rings replacement	180	12
69	Crank Shaft Assembly replacement	330	22
70	Crank Shaft Bearings replacement	330	22
71	Crank Case Assembly replacement	330	22
72	Crank Case (RH) replacement	330	22
73	Crank Case (LH) replacement	330	22
74	Input Shaft and Out Put Shaft/Speed Gears replacement	330	22
75	G.S. Drum replacement	330	22
76	G.S. Forks replacement	330	22
77	Replacement of Balancer Idler gear	210	14
78	Replacement of starter clutch	75	5
79	Complete Wiring Harness replacement	135	9
80	Replacement of BCU.	45.00	3
81	Starter motor replacement	45.00	3
82	Speedometer Assembly replacement	30.00	2
83	SPM Console Upper Cover replacement	30.00	2
84	Head Lamp Assembly replacement	15.00	1
85	H.T. Coil Single replacement	15.00	1
86	A/C Regulator (Voltage) replacement	15.00	1
87	Ignition Switch Assembly replacement	30.00	2
88	Rear Brake Light Switch replacement	15.00	1
89	Tail Lamp Assembly replacement	15.00	1
90	Rectifier / RR unit replacement	15.00	1
91	Fuel Gauge Float Unit replacement	30.00	2

**Action Matrix:**

SL	Key Information	Works Manager/DSE	PDI In charge	Sales In charge	Service Advisor	Spares In charge & Warranty In charge
1	Salient Features	Share with Sales /Service /PDI teams Share with Sales /Service /PDI team	Update	Understand features of this new variant and share with the sales team	Update	Update
2	Technical Specification			Hand over to customer		
3	Read before you ride		Send report		Update	
4	PDI Checklist		Update		Update new schedule	
5	Periodic Maintenance & Lubrication Chart		Update			Order exclusive Parts
6	Exclusive Part List		Update			Keep copy in warranty file
7	Reimbursement of warranty Jobs					
Initials						
Date						